

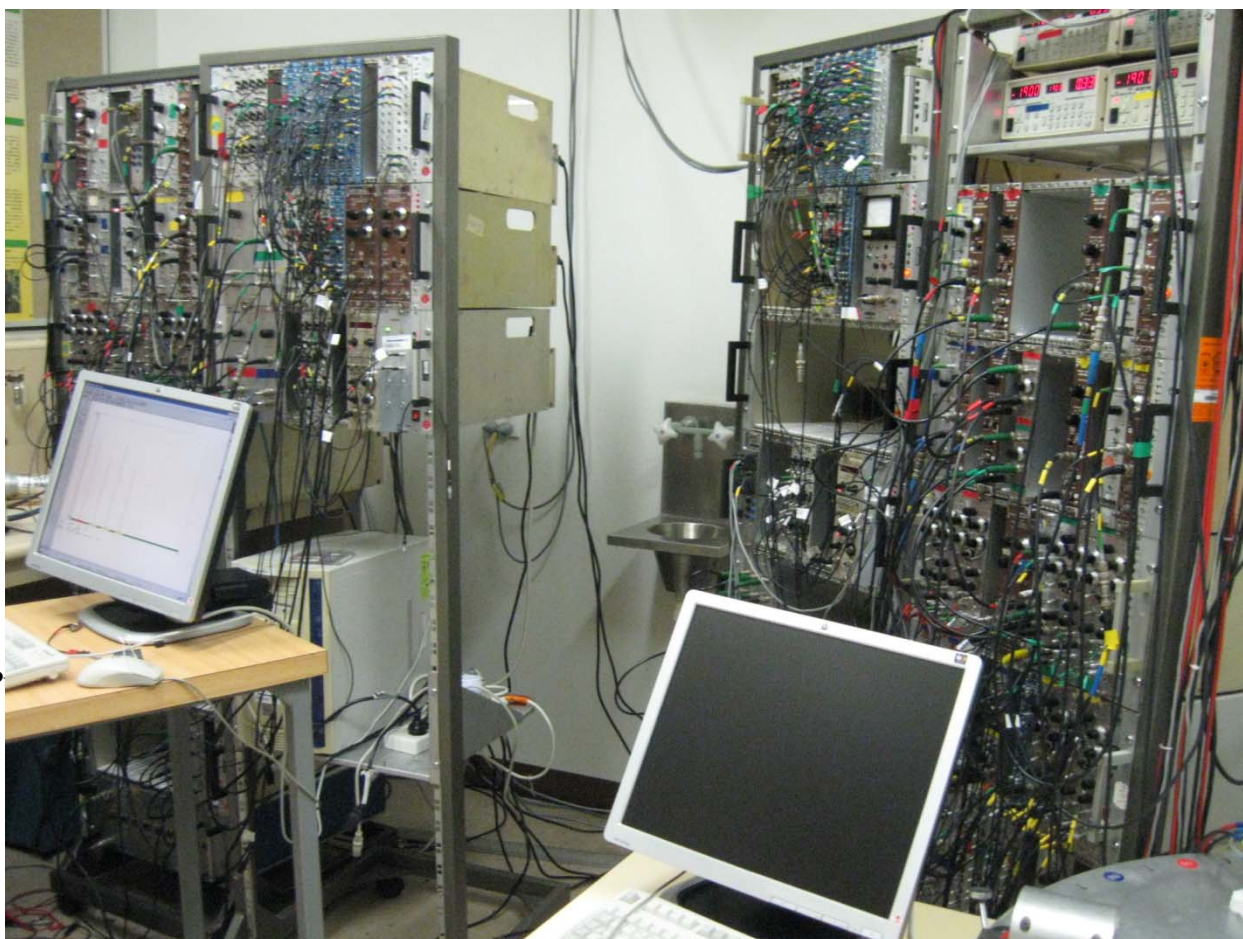
Perturbed Angular Correlation (PAC) Spectrometers

Building 26 (PEMS South) room G42, contact Heiko Timmers

Two independent time differential perturbed angular correlation (TDPAC) systems with NaI detectors.

Radioactive probe systems currently available are:

- $^{111}\text{In}/\text{Cd}$ using the in-house radioisotope implanter
- $^{100}\text{Pd}/\text{Rh}$ using the 14 UD Pelletron accelerator at ANU



P